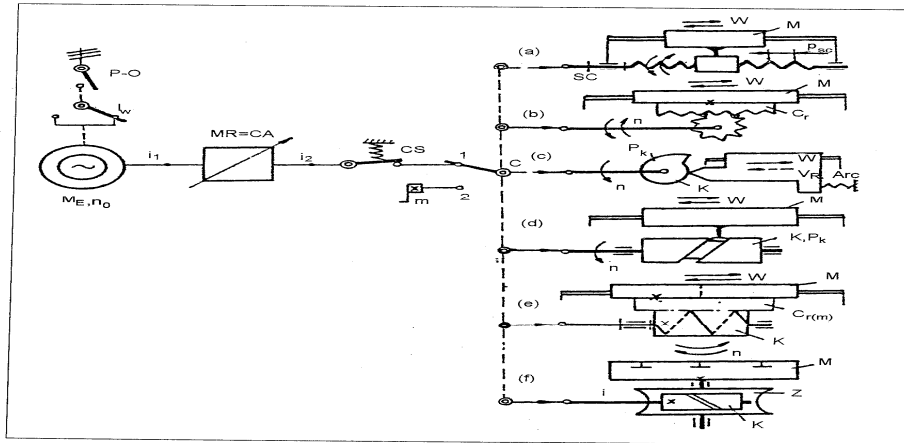


KINEMATICS CHAINS

CAPALB Dorina, MIHAILA Ioan
University of Oradea

Key words: kinematics chains, input measure, output measures, regulating mechanisms, variation ratio



The mechanisms of the cinematic chain of advance

The present paper focuses on the main characteristics of the generator kinematics chains, their mechanisms and transfer and regulation equation by which they function. The study presents cinematic chains in terms of their nature and structure, the modification of their output/input signals, determining the trajectory and the frequency of the movement and the mechanisms that serve this purpose. The input and output measures are referred to in the second part of the present study the variation ratio of these being rendered in their corresponding expression.

References:

- [1] Botez, E. *Cinematica mașinilor-unelte*. București, Editura Tehnică, 1961.
- [2] Botez, E. *Mașini-unelte. Vol. I. Cinematica*. București, Editura Tehnică, 1969.
- [3] Catrina, D. ș.a. *Mașini-unelte cu comandă numerică. Vol. I*. Universitatea Politehnică din București, 1993.
- [4] Ghioane, A., ș.a. *Proiectarea cinematică a cutiei de viteze acționată de Motor electric cu reglare continuă*. În: *Concepție, Tehnologie și management în construcția de mașini*. Secția 4-Mașini-unelte. Institutul Politehnic „Gh. Asachi” Iași, 1992, p. 227-234.